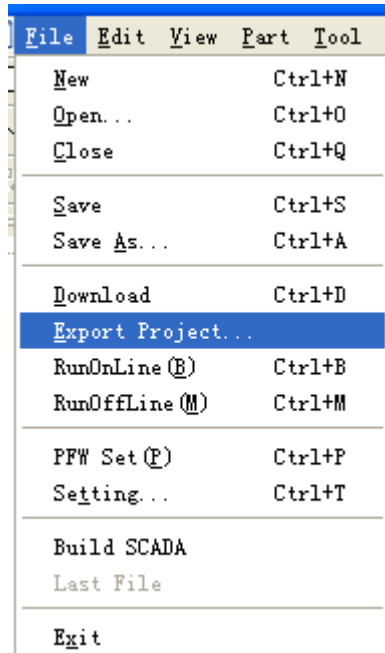


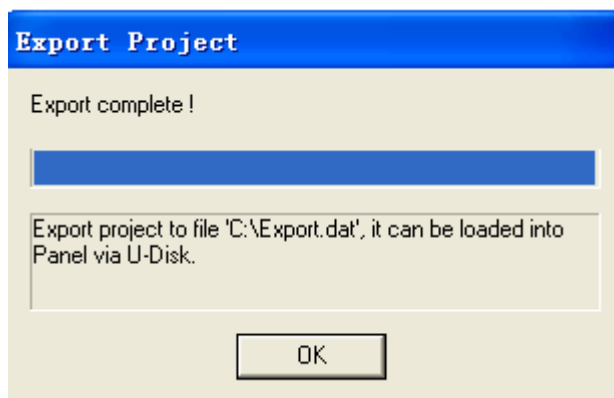


U-disk import(Touchwin v2.c.6d new function)

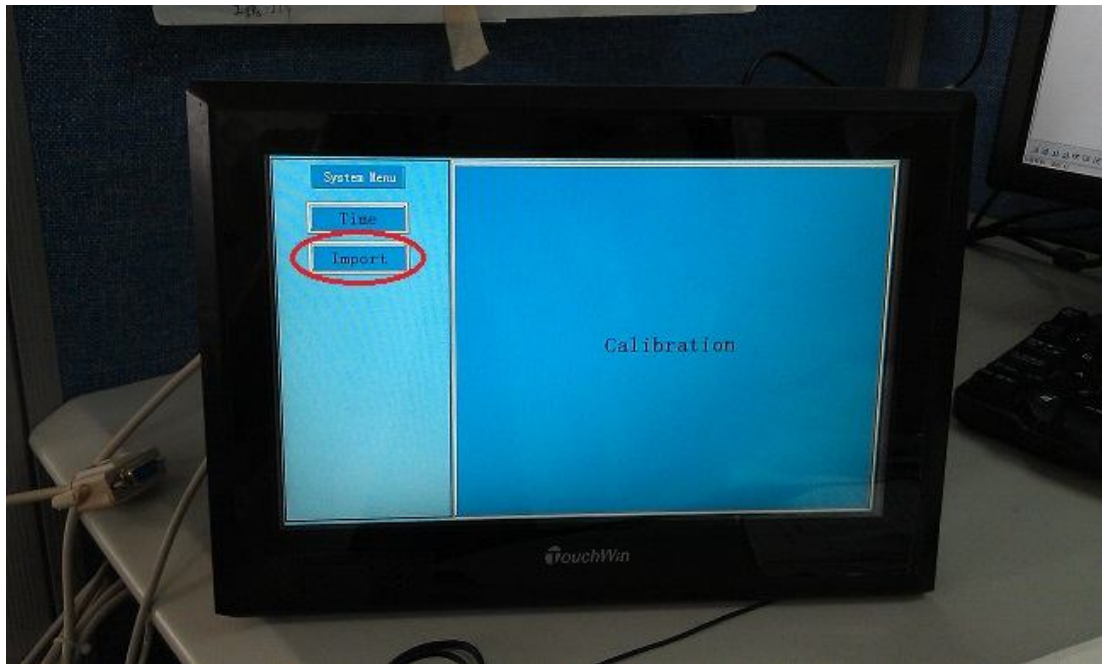
1. Save the Touchwin project, click "File—Export Project..." .



2. Below window will appear, click OK.



3. Find the "Export.dat" in C:\, please note the file name cannot be changed.
4. Copy this file to U-disk. Insert the U-disk into the HMI.
5. Turn ON DIP switch 3 on the back of HMI, power on it. It will show below screen in the HMI:



Click import on the screen. After downloading the project, turn OFF DIP switch 3 and repower on the HMI. (For old version HMI, please download an empty project into HMI with Touchwin v2.c.6d software).

Note:

1. The type must be the same to HMI type when programming.
2. If select wrong type in the Touchwin software, nothing will happen when you click import button!